



# Management Cloud Release Notes

Build 1.6.11

Sept 30, 2024

# Contents

Contents .....	1
Management Cloud 1.6 Overview .....	2
Management Cloud System Requirements .....	3
CER Fixes in 1.6.11.....	4
Known Issues.....	5
For More Information .....	5
Appendix 1: History of Feature Additions By Version.....	6
Appendix 2: History of CER Fixes By Build .....	18

# Management Cloud 1.6 Overview

The 1.6.11 release includes:

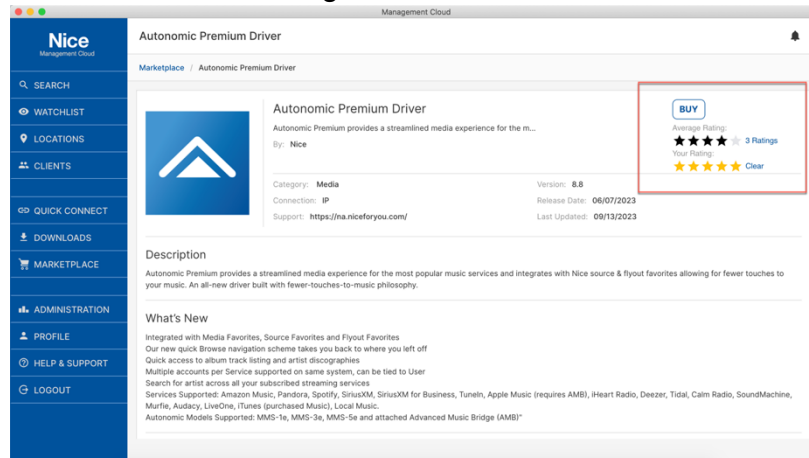
- Nice Voice “Lifetime” support
- Bug Fixes and Enhancements. See “CER Fixes in 1.6.11”

The 1.6.10 release includes:

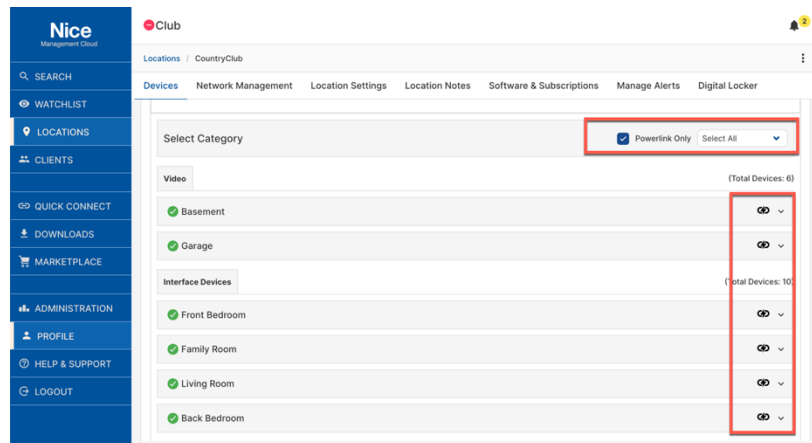
- Nice Voice subscription support

The 1.6.9 release includes:

- Marketplace Ratings
  - Marketplace now allows you to rate your favorite drivers and help your fellow Nice Home Management installers choose from a growing list of Nice and 3<sup>rd</sup> party drivers.
    - Give a driver a 1–5-star rating
      - Update past ratings at any time
      - One vote per driver per user account
    - Average rating, shown as shaded stars
    - Number of Ratings shown on main record



- 
- Location Notes
  - When initiating an OTA update, a Location Note will be automatically generated for that location, including initiator attribution.
- Powerlink Filter
  - If any of your devices are configured with Powerlink in Configurator, the power details and control are available in the location. Now with the Powerlink filter, you can find all the enabled devices quickly.



- Support for Core OS 8.9

Several Fixes and Enhancements. See “CER Fixes” section later in this document

Note:

Controllers must be running Nice core release 8.8 or later to utilize Configurator v2, OTA Version Control and related features.

Controllers must be running Nice core release 8.3.11 or later when adding as a Location in Management Cloud. The Quick Connect function in Management Cloud is not dependent on the core release version running on the controller.

## Management Cloud System Requirements

- Stratus Application
  - PC running Windows 10, or
  - Mac running MacOS 10.15.1 and later
  - 128MB RAM
  - 1GB free disk space (complete library download)
- Nice Core software 8.3.11 or later is required on controllers added as locations in Management Cloud.

# CER Fixes in 1.6.11

## Fixes in 1.6.11 (Sept 2024)

- CC001-5112 Drag-Selecting term in Global Search can dismiss the Search menu
- CC001-5181 Nice Voice: Support for "Lifetime" License Type
- CC001-5196 Advanced Content Search use the Enter/Return button

## Fixes in 1.6.10 (Sept 2024)

- Nice Voice Subscription support

## Fixes in 1.6.9 (July 2024)

- CC001-5077 Launch of Config v2 from Management Cloud quits immediately, next launch attempts may work
- CC001-2875 VT1512-IP A support improved
- CC001-4515 Adjust Scale of CPU meters
- CC001-4981 "Check for Updates" button can remain blue after update completed
- CC001-4989 The UPS AVR "under voltage regulation" and "over voltage regulation" alerts are reversed
- CC001-4916 Deleting Controller from Location can make spillover menu disappear
- CC001-4999 The UPS AVR alerts using incorrect message
- CC001-4989 The UPS AVR alerts are reversed
- CC001-4878 Marketplace: Broken Image icons shown when no screenshot images uploaded
- CC001-4611 OTA spinner icon rotation correction
- CC001-5129 Intermittent white screen when drilling into Location.
- C001-4112 Marketplace breadcrumb now includes last search term
- CC001-5117 Zip files supported as a download type
- CC001-5041 Weather caching improvements for Nice controllers

## Known Issues

- Profile > Settings
  - This version supports English only
- Alerts
  - Devices that exist in multiple subsystems (e.g. ITP, Nice doorbell) default to sending alerts for each instance of the device. Alerts for these types of devices will be consolidated in future build but in meantime you can adjust alerts as desired per device instance.
- System Logs
  - There is no date/time selector in System Logs section of Management Cloud so initial access will only show current logs presented by the controller

## For More Information

<https://na.niceforyou.com/brands/elan/>

Management Cloud FAQs on the Nice website includes

- Apply for Management Cloud Account
  - Authorized Nice Dealers & Distributors and Nice API Partners only
- Management Cloud Installer\*
- Management Cloud Release Notes\*
- Management Cloud User Guide\*

\* Also located in the Downloads tab in the Management Cloud application

<https://forum.elancontrolsystems.com/discussions>

Management Cloud Discussions

Management Cloud Release Information and Tech Alerts\*\*

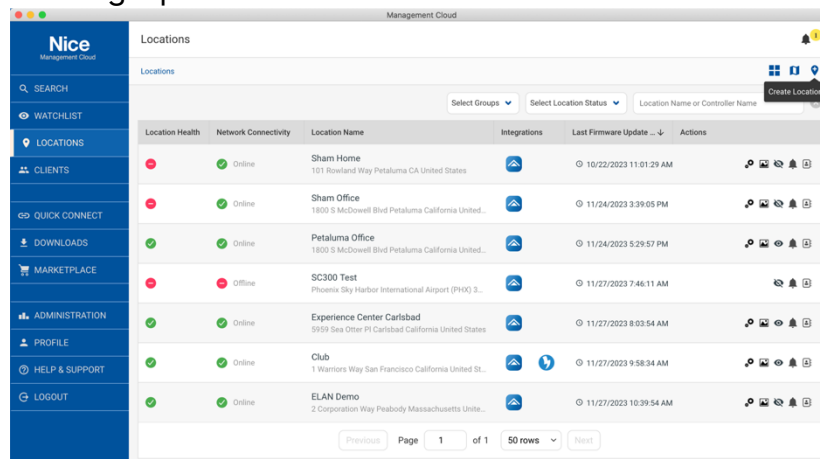
Nice Cloud Services Status

\*\* Also sent via Management Cloud Notifications

# Appendix 1: History of Feature Additions By Version

The 1.6.4 release includes:

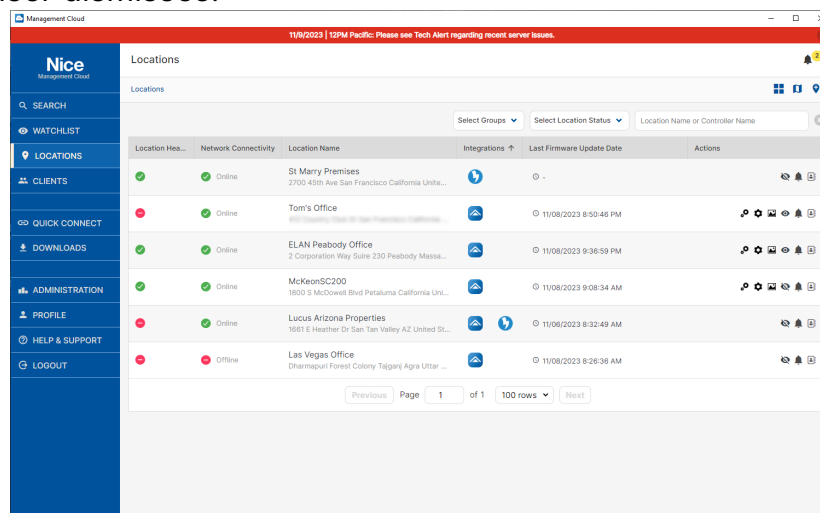
- Application & Cloud Architecture
  - Completely Refactored Management Cloud apps & backend services
  - Faster device & status loading
  - Copy/Paste Functionality supported in Windows & Mac applications
  - Windows-Certified and MacOS-Notarized installers
- Nice Branding Update



The screenshot shows the 'Locations' page in the Nice Management Cloud. The interface includes a sidebar with navigation options like SEARCH, WATCHLIST, LOCATIONS, CLIENTS, QUICK CONNECT, DOWNLOADS, MARKETPLACE, ADMINISTRATION, PROFILE, HELP & SUPPORT, and LOGOUT. The main content area displays a table of locations with columns for Location Health, Network Connectivity, Location Name, Integrations, Last Firmware Update, and Actions. The table lists several locations, including Sham Home, Sham Office, Petaluma Office, SC300 Test, Experience Center Carlsbad, Club, and ELAN Demo.

Location Health	Network Connectivity	Location Name	Integrations	Last Firmware Update	Actions
●	● Online	Sham Home 101 Rowland Way Petaluma CA United States	🔗	🕒 10/22/2023 11:01:29 AM	🔧 📄 📢 🗑️
●	● Online	Sham Office 1800 S McDowell Blvd Petaluma California United...	🔗	🕒 11/24/2023 3:39:05 PM	🔧 📄 📢 🗑️
●	● Online	Petaluma Office 1800 S McDowell Blvd Petaluma California United...	🔗	🕒 11/24/2023 5:29:57 PM	🔧 📄 📢 🗑️
●	● Offline	SC300 Test Phoenix Sky Harbor International Airport (PHX) 3...	🔗	🕒 11/27/2023 7:46:11 AM	🔧 📄 📢 🗑️
●	● Online	Experience Center Carlsbad 9539 Sea Otter Pl Carlsbad California United States	🔗	🕒 11/27/2023 8:03:54 AM	🔧 📄 📢 🗑️
●	● Online	Club 1 Warriors Way San Francisco California United St...	🔗	🕒 11/27/2023 9:58:34 AM	🔧 📄 📢 🗑️
●	● Online	ELAN Demo 2 Corporation Way Peabody Massachusetts Unite...	🔗	🕒 11/27/2023 10:39:54 AM	🔧 📄 📢 🗑️

- Search
  - Optimized-for-Search Documentation and Downloads
  - Global Search now includes License Keys
- New Notification: Critical Notifications will display as a banner on all tabs until user dismisses.



The screenshot shows the 'Locations' page in the Nice Management Cloud, similar to the previous one, but with a red banner at the top indicating a critical notification: '11/0/2023 | 12PM Pacific: Please see Tech Alert regarding recent server issues.' The table of locations is updated with new entries: St Marty Premises, Tom's Office, ELAN Peabody Office, McKeenSC200, Lucus Arizona Properties, and Las Vegas Office.

Location Health	Network Connectivity	Location Name	Integrations	Last Firmware Update Date	Actions
●	● Online	St Marty Premises 2700 45th Ave San Francisco California Unite...	🔗	🕒 -	🔧 📄 📢 🗑️
●	● Online	Tom's Office 1800 S McDowell Blvd Petaluma California United...	🔗	🕒 11/08/2023 8:50:48 PM	🔧 📄 📢 🗑️
●	● Online	ELAN Peabody Office 2 Corporation Way Suite 230 Peabody Massa...	🔗	🕒 11/08/2023 9:36:59 PM	🔧 📄 📢 🗑️
●	● Online	McKeenSC200 1800 S McDowell Blvd Petaluma California Uni...	🔗	🕒 11/08/2023 9:08:34 AM	🔧 📄 📢 🗑️
●	● Online	Lucus Arizona Properties 1061 E Heather Dr San Tan Valley AZ United St...	🔗	🕒 11/06/2023 8:32:49 AM	🔧 📄 📢 🗑️
●	● Offline	Las Vegas Office Dunsmuir Forest Colony Telpoñi Agra Uttar ...	🔗	🕒 11/08/2023 8:28:36 AM	🔧 📄 📢 🗑️

The 1.5.4 (August 2023) maintenance release includes:

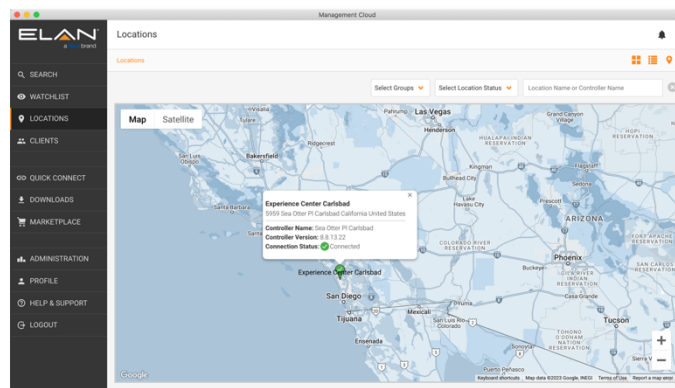
- See “CER Fixes in 1.5.4”

The 1.5.2 (June 2023) maintenance release includes:

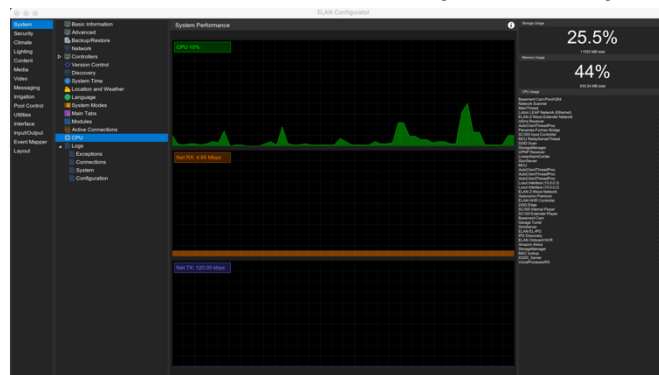
- See “CER Fixes in 1.5.2”

The 1.5.1 (June 2023) software release includes:

- Cross-Platform Application
  - Management Cloud application support for Windows and now for MacOS\*.



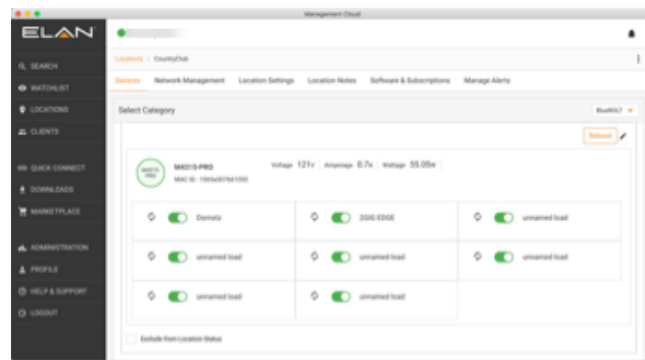
- Nice 8.8 Support
  - Configurator v2 Support\*:
    - Support for all-new, cross-platform Configurator v2 (aka Config v2) based on our proven thin client architecture. Note: Configurator (Classic, aka Config v1) will continue to be available for Windows systems only.



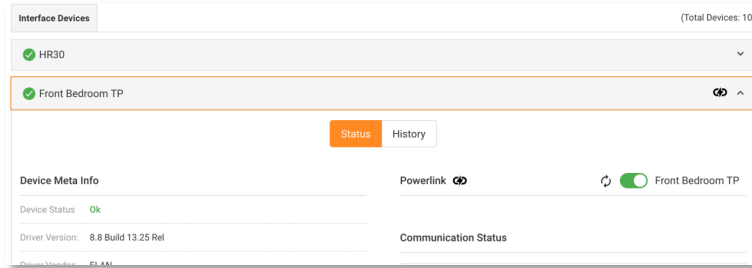
- OTA Version Control\*:



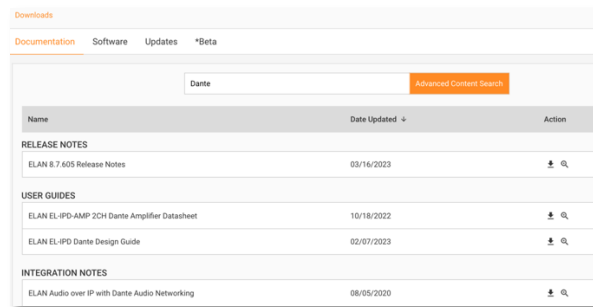
- Update Nice controllers quickly and safely using our OTA (Over-the-Air) updated workflow. Navigate into a location, click on the update icon, select your desired version and off it goes.
  - See “Management Cloud OTA Version Control” Section below for details
- Native BlueBOLT Support
  - Leverage BlueBOLT infrastructure to manage your BlueBOLT-enabled devices in Management Cloud, keeping all your device control in a single interface. Common use case would be to use a BlueBOLT device manage power to your Nice controller, where “Powerlinked” devices are managed by the controller. But all devices in a location can be power managed by BlueBOLT devices added to Management Cloud.
  - How to Add: In a location, just select “Add Device” from the upper right overflow menu (three vertical dots).
  - Scheduled Commands not yet supported in Management Cloud, but functionality soon be covered in cloud-based events feature.
  - Note: At this time, a device cannot be claimed in mybluebolt.com and Management Cloud simultaneously. If you wish to move your device to Management Cloud, delete it from mybluebolt.com, then claim in Management Cloud.



- Powerlink Support
  - Powerlink associations made in Nice Configurator will now expose power controls (On/Off/Cycle) for that device in its Management Cloud location, giving you more control to detect and resolve issues from a single interface.



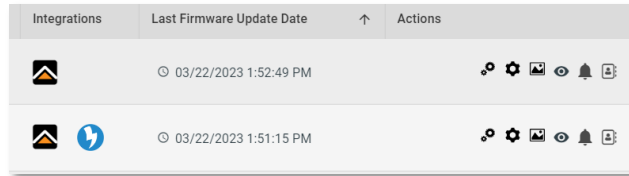
- Search & Filters
  - Documentation Advanced Search
    - Documentation tab now features the same advanced content searching function found in Global Search (upper left of application). Search thousands of documents by their content, not just their title or category as before.



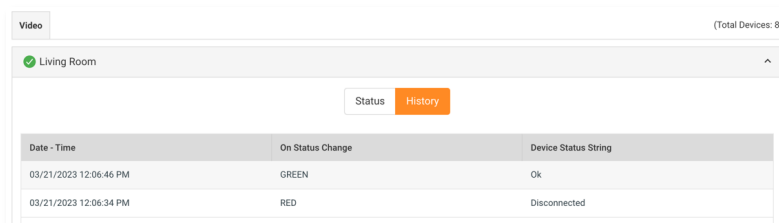
- Video Notes Filter
  - tab now includes a name/description filter to help you find your topic of interest more quickly. Video Notes are also now searchable in Global Search.
- Global Search
  - Global Search (top left of application) will continue to evolve to find all docs, Help & Support content, clients, locations, devices/drivers in locations, Marketplace listings.
- Significant Performance Improvements
  - Location and Device Status performance improvements ensure more immediate updates, closely matching status updates on your controllers and the devices attached. The update provides faster access to Viewer, Configurator, Configurator v2 and the new OTA buttons in a location, even on larger systems with a lot of devices.
- General UI/UX Improvements
  - New Status Icons:
    - Status icons have been updated for improved accessibility, based on user feedback.



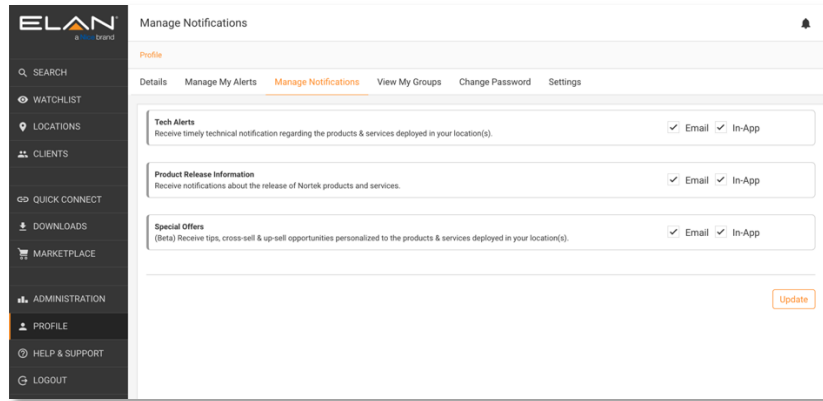
- Locations List & Card View Updates:
  - In Locations List & Card View, you can now launch Configurator (large gear icon), Configurator v2 (two gear icons) and Viewer (touchpanel icon) from the Actions column, based on the controller configuration in your Location. Saving time & taps!



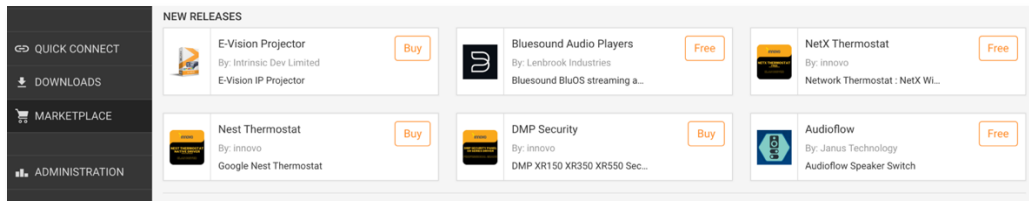
- Device History:
  - Accessed when opening a device tab in your location, Device History gives you the last week of device status updates, useful in troubleshooting.



- Manage Notifications Update:
  - Notifications are important updates from Nice/Nice, and now include an email option so you'll never miss a message.
    - Profile > Manage Notifications.



- Marketplace
  - New Releases:
    - New Releases section so you can quickly find the latest additions to the Nice ecosystem.



\*Controller must be running Core OS 8.8 and later. The Core OS 8.8 installer is only available for Windows. Please update controllers from a Windows machine and subsequent updates can be done with Management Cloud 1.5 and later, on Windows and MacOS. Configurator (Classic, aka Config v1) is only available on Windows.

It is imperative that Installers retain access to a Windows PC, or PC emulator on Mac, for running Windows executable installers as necessary, and for restoring Configurator (Classic, aka Config v1) .ebk backup files, during this transition to cross-platform configuration and Over-the-Air (OTA) controller updates.

## Management Cloud OTA Version Control

Over-The-Air (OTA) Nice Controller Updates are faster than the traditional Windows executable update and can be performed locally or remotely via Management Cloud for Windows and MacOS.

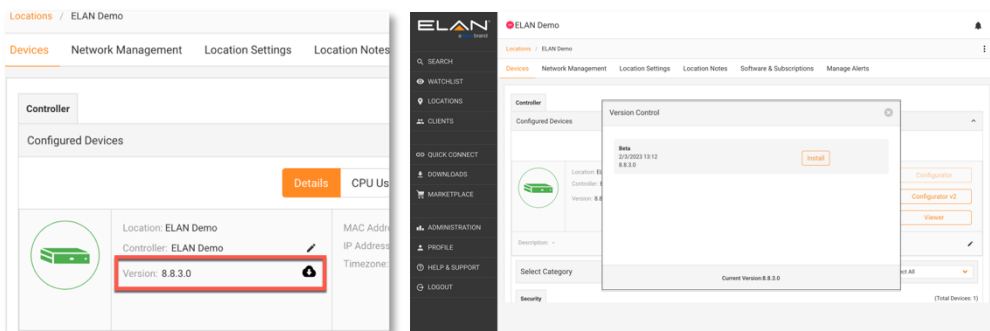
Your controller must be running Core 8.8 build or later, and you must be using Management Cloud 1.5 or later to access this function. Just go to your location in Management Cloud, and next to the current core version listed for your

controller, click on the cloud download icon to see your version control options.

If you have extenders attached, you will be prompted to optionally include those in the update routine. As with all installation, performing a local backup first is recommended. We will be offering a cloud backup & restore option as part of the OTA Version Control workflow later this year.

Management Cloud initiates OTA updates, but the controller(s) download the update, install and reboot, so bandwidth for OTA is primarily dictated by your controllers' network. This means you can initiate the update in Management Cloud and then close the dialog and do other tasks as the updates continue. Refresh the Location to see version and status update when controller comes back online.

It is imperative that Installers retain access to a Windows PC, or PC emulator on Mac, for running Windows executable installers as necessary, and for restoring Configurator (Classic) .ebk backup files, during this transition to cross-platform configuration and Over-the-Air (OTA) controller updates.



OTA VERSION CONTROL IN MANAGEMENT CLOUD 1.5

Please see Management Cloud 1.5 Release Notes for other feature updates

The 1.4.10 software release includes:

- Fixes and Enhancements listed in the “CER Fixes in 1.4.10” of this document

The 1.4.9 software release includes:

- Support for multiple EL-SW-NVR licenses (Onboard/Extender). Feature requires Nice Core OS 8.7.501 and later.
- Marketplace: New Releases section
- Reporting & Analytics Update (Beta Access only)

The 1.4.25 (April 14) software release includes:

- Support for Nice Utilities (8.7)
- Native BlueBolt device claiming & support (Beta Access Only)
- Fixes and Enhancements. See CER section in this document.

The 1.4.4 (Feb 2022) software release included:

- Minor User Interface Updates
- Fixes and Enhancements. See CER section in this document.

The 1.3.0 (April 2021) software release included:

- Marketplace
  - Nice 3<sup>rd</sup> party drivers can now be browsed/searched in Management Cloud.
  - Use the Global Search option (upper left of app) to search for drivers by name, description, subsystem, developer name.
  - Use the filter at the top of Marketplace to quickly find driver by name, developer name, category.
  - Sort pulldown to switch between category or developer grouping order
- Location Creation/Update Changes
  - Create Location without Controller allows you to proactively create a location before an installation. If Nice controller is not planned for a location, you can still create a location, clients, notes as desired. Easing the requirement for an Nice controller in a location paves way for other integrations.
  - Remove/Replace a Controller in a location to manage controller in case of RMA or upgrade without having to create a new location from scratch, losing historical data.
- Documentation Subcategories
  - To aid in browsing, especially for integration notes, documents can be grouped by subcategory (subsystem in the Nice context, e.g: Irrigation)
  - Filter at the top of the Documentation screen will also work for subcategories.
- Reporting & Analytics (beta)

- User Audit Report will allow Owners and Tech Leads to run a report on their company's Management Cloud users, tracking activity in the platform.
  - Activities shown include log-in/log-out; add/update/delete location; add/update/delete client; add/update/delete notes; add/update/delete groups; rename controller; download document/software; launch configurator/viewer.
- General Improvements
  - List View added to Watchlist
  - Management Cloud installer signed
  - Tab, section and field label improvements

The 1.2.0 (Oct 2020) software release included:

- License Management
  - Support for EL-SW-100-PRO license.
    - Required SC-100 running 8.5.9 or later
- Help Center Tab
  - Located in Help & Support tab, the new Help Center provides access to product information including data sheet, install guides and other technical information
- Group Overlap
  - Groups expanded to allow same location and user to exist in multiple groups, giving more flexibility into how groups can be used and assigned.
- Beta Tab
  - Beta tab in Downloads area to deliver docs & downloads for those in the Nice beta program. Beta program is by invitation only and this tab will not be present if not enrolled in program.
- Enhancements
  - Improved Global Search
  - Editable Latitude and Longitude values for Location
    - Values can be entered manually or overwritten on Location Settings tab. Useful in cases where Google Map API cannot find an entered address
  - Company Logo
    - Your Company Logo and Address now editable in the Administration tab
  - Emails
    - Reminder Emails for account completion sent every 24 hours, up to 3 days, or until accepted
  - Improved navigation for Location and Client cards
  - General
    - App Version number to login screen

- Controller renaming restrictions eased to match Tech Support tool

The 1.1.1 software release included:

- License Management
  - New “Software & Subscriptions” tab in Locations
    - Lists gVSL license installed on a Location’s Nice Controller
    - If license not present, option to apply gVSL license code from within the Management Cloud application.
    - Note: Controllers must be running Nice core release 8.4.96 or later to apply a gVSL license within Management Cloud.
- Performance Improvements
  - Faster location loading, up to 1000+ locations
  - Improved Global Search
- Enhancements
  - All Locations Filter
    - Quickly Filter Locations by Location or Controller Name, Location Status, Group association or combination thereof.
  - Default Landing Page
    - In your profile settings, choose between Watchlist and Quick Connect as your default landing page when you log in.
  - Emails
    - Reformatted email header provides device status
    - Unsubscribe link in Alert emails
- Fixes
  - See “CER Fixes” section of this document

The 1.0.5 software release included:

- Performance Improvements
  - All Locations, Watchlist, Quick Connect, Clients, Clients Location screens

The 1.0.4 software release included:

- Location Views Updates
  - List View sorting, formatting and navigational improvements
  - View Selection and sort order are now remembered
  - Default Zoom on Map View now relevant to locations
- Quick Connect



- Saved Controllers: Enhancements to better handle saving HC controllers and controllers without saving password.
- Search
  - Global search now includes Device Type and Driver names
- Alerts
  - Email alerts subject change to better see location/device in preview
- Application
  - Application updates are now a foreground activity, making update status clearer to user.
- Fixes and Enhancements
  - See “CER Fixes” section of this document

The 1.0.3 software release included:

- Login Page, Icon Redesign
- Application Form and Account Workflow improvements
- Manage My Alerts
  - New Bulk updating for On State Change, Alert Mode, Alert Threshold is available in this tab via the Column Editor at the top of each location.
- Saved Pagination Settings
  - Tabs with “Rows” pulldown now retain last selection
- Quick Connect Notes
  - One can now add notes to Saved Controller in Quick Connect tab. These notes are indexed and searchable in the search field at the top of the screen.
- Application Upgrade Improvements
  - Application update notifications and installation–suggested and forced–are now done in the foreground so progress is seen.
- Dozens of Fixes and Enhancements
  - See “CER Fixes” section of this document

The 1.0.2 software release included:

- Alert Default Settings
  - Default Alert settings can now be set in Profile > Settings, including On State Change, Alert Mode and Threshold.
  - “Default Alert Settings” to your alert settings when you are added to a location, such as when you create a location, added to a location as a member of an Admin Group or manually added via the “Add Recipient To All” and “Add Alert Recipient” on the Manage Alerts tab.
  - Default Alert Settings updated to:

- On State Change = Green | unchecked
  - Alert Mode = E-Mail | unchecked
- Alert Threshold
  - Additional thresholds added: +30, +60, +90 minutes
- Address Lookup Function
  - “Search Address...” field added to applicable areas of application to suggest addresses to speed entry and pin placement accuracy on Location map.
    - NOTE: Client and Client Contact addresses entered without the Search function may result in inaccurate map placement. Existing client records can be updated and saved using this function.
- Note Formatting
  - Note formatting improvements
  - Duration Calculation
- Downloads Improvements
  - “View” option for Documentation to open PDFs from within application
  - Column sort options added
- Notifications
  - Notifications enabled
  - Auto-mark as read
- Software Update Functions
  - Update Available Function
- Dozens of Fixes and Enhancements
  - See “CER Fixes” section of this document

The 1.0.1 software release included:

- Alert Threshold
  - Refine in-app and email alert frequency by customizing threshold on a per-component basis. Reduce alerts for oscillating devices.
  - Select from 0 (no threshold), +3, +5, +10, +15 minutes
- Address Lookup Function
  - “Search Address...” field added to applicable areas of application to suggest addresses to speed entry and accuracy.
- Note Categories
  - Note Categories can be defined by Admins and accessed by employees in the Location Notes section of each location to help classify work performed. This will help standardize entries for forthcoming reporting functions.

## Appendix 2: History of CER Fixes By Build

### Fixes in 1.6.4 (January 2023)

- CC001-4915 "User Controller Name" checkbox disabled in Location Settings
- CC002-6518 Config v2 disconnects if file open/save dialog held open too long
- CC001-4638 Mac App: Camera Permissions for 1.5.x
- CC001-4567 Mac Build Device Permissions Issues
- CC001-4764 Minor UI issue with Clients Contact page
- CC001-4766 Database Pipeline Problem processing "Controller Subsystems"
- CC001-4767 Device Status icon for BB Devices turns to red after a few minutes
- CC001-4768 Unlocking outlets functionality on BBR232 does not work properly
- CC001-4769 Unable to CYCLE individual outlets on VT1512 and VT4315 devices
- CC001-4771 Rename device does not get propagated to top level in the navigation tree
- CC001-4791 Bluebolt device states are not changed from we Exclude the Device.
- CC001-4806 No log out confirmation dialog
- CC001-4825 Delete Client Button coloring
- CC001-4828 Tab hover states correction
- CC001-4832 Side menu not remaining selected
- CC001-4836 Controller Pane background color
- CC001-4843 Triangle symbol missing in text field while showing warning
- CC001-4847 Delete Client Button Dialog coloring correction
- CC001-4855 On Window the notification banner having long text seems distorted
- CC001-4856 Viewer name update in the app dock
- CC001-4859 Controller posting correction for intermittent character issue
- CC001-4866 'In Progress' state for BlueBOLT outlet toggle should be orange, not blue

- CC001-4868 Clicking on scanned controller in "Add Controller" dialog doesn't enter its name in the controller field
- CC001-4882 Announcement Banner now shown in app

#### Fixes in 1.5.4 (August 2023)

- CC001-4772 App crash when adding location or client (Google Map API)

#### Fixes in 1.5.2 (June 2023)

- CC001-4661 OTA Release slot propagation issue

#### Fixes in 1.5.1 (June 2023)

- CC001-4498 Management Cloud: Apply "Autonomic Premium" License
- CC001-4497 Management Cloud : Device Status refactoring to greatly speed access to OTA, Viewer, Configurator buttons, especially on large systems.
- CC001-4403 Management Cloud: Global Search now Includes Video Notes
- CC001-4518 Management Cloud: OTA updates with Extenders should have checkboxes checked by default
- CC001-4331 Management Cloud : Smarter cursor placement on Login Screen

#### Fixes added in 1.4.10 (June 15 2022)

- CC001-4278 The update mechanism, found on Downloads > Software > Updates, in Management Cloud 1.4.9 is not currently working. This is fixed in 1.4.10 so users on 1.4.9 will need to manually download the next installer, found in Management Cloud: Downloads > Software.
- CC001-4277 Help Center not loading. Tab temporarily hidden

#### Fixes added in 1.4.9 (June 15 2022)

- CC001-4183 Forgot Password link gives unsecure browser message that must be bypassed
- CC001-4182 CV1/CV2 interface representation for claimed BlueBOLT devices\*
- CC001-4224 User Audit Report corrections

- CC001-4169 Improved Time Zone Sync with BlueBOLT devices\*
- CC001-3539 Quick Connect: Saving will no longer remove controller from active Controller Access window.
- CC001-3853 Needle exceeds Rx values in CPU graph

\* BlueBOLT integration for Beta customers only

Fixes added in 1.4.8 (April 2022)

- CC001-4065: Quick Connect > Local Controllers: Slider bar to allow viewing of extended list of scanned controllers

Fixes added in 1.4.4 (Feb 2022)

- CC001-3536 Cannot Add Controller from Deleted Location
- CC001-3501 Software & Subscription Sync will readd missing license on controller when visiting tab
- CC001-3577 License key for SC100 getting applied for GVSL ,does not show any validation error message
- CC001-3625 Help Centre tab not loading on Production
- CC001-3724 Onboard NVR license Support
- CC001-3822 Better handling empty MAC address sent by controller

Fixes added in 1.3.0 (April 2021):

- CC001-3267 Help & Support: Tech Alert default sort by Date
- CC001-3337 Beta Tab, default sort by Date
- CC001-3240 Client email not indexed in Global Search
- CC001-3239 Client addresses not indexed in Global Search
- CC001-3072 No Data messaging improvements
- CC001-2527 IP Address sorting fix on Network tab

Fixes added in 1.2.0 (Oct 2020):

- CC001-3139 All locations API performance improvements
- CC001-3125 Updated Error message shown on the Software and Subscription tab when controller is offline
- CC001-3113 gVSL count shown as Unknown on some SC100 controllers
- CC001-3091 Controller naming restrictions eased to match Tech Support tool restrictions

- CC001-3078 When we visit the Software and Subscription with unknown license installed, it does not show it in list for very 1st time..
- CC001-2980 Tool Tip improvement for Lat/Lon
- CC001-2959 System Permission for accessing Groups (in Admin) affecting accessing groups in All Locations
- CC001-2958 Location Details >>Manage Alert , Configured devices taking more than 5 sec to load with 100+ devices
- CC001-2953 Download Doc and PDF viewing improvements
- CC001-2949 Tech Alert API improvements
- CC001-2944 Default image, initials, for Company logo
- CC001-2936 Inconsistent performance with Update button on Location settings
- CC001-2908 FE: Company logo edit and update
- CC001-2881Global Search Improvement
- CC001-2880 Email Alert: Unsubscribe link leads to 404
- CC001-2879 Few pages are taking time to load Subsystem alert and on controller details page
- CC001-2878 [Client ] Tapping on Show Contact info on client card does not shows contact info
- CC001-2868 Download Display date off in application
- CC001-2818[Intermittent]The subsystem alert api on Manage My Alert screen takes time to load around 10 sec
- CC001-2817 [Group][User][Report & Analytics] The pagination set rows state is not maintain if we change to other tabs.
- CC001-2815The Exclude Device took a long to check or unchecked on Controller Details page
- CC001-2814[ Location Health API] Faster location health update when controller offline.
- CC001-2757Location Details > Manage Alerts, page takes around 5 sec for loading the page for 100+ devices
- CC001-2751FE: Performance Improvement for Users tab
- CC001-2750 FE: Performance Improvement for Groups tab
- CC001-2743 BE API- Performance improvement for all clients api
- CC001-2739 BE - API Performance improvement for Download Documents
- CC001-2735 Login Screen: Change "Remember Me" to "Save Username"
- CC001-2659 Improved Client Card Navigation
- CC001-2631Correct direction of Expand / Collapse arrows
- CC001-2514[Clients] All Clients tab List View state not persisting the after switching navigating to other tabs
- CC001-2512Add App Version number to login screen

- CC001-2438 Application Page: Footer update
- CC001-1224 Network Management Screen updates
- CC001-1196 All Clients: Contact Info overlay: Incorrect Icon

#### Fixes added in 1.0.5

- CC001-2720 All locations pagination set rows state is not maintained
- CC001-2731 Performance improvements for Location Health
- CC001-2749 Performance improvements for All Clients
- CC001-2747 Handle of 404 error on client image
- CC001-2744 API Performance improvement for STUN Request timeout
- CC001-2742 Performance improvement for Manage My Alerts
- CC001-2726 All Location Health API with caching improvements
- CC001-2786 Search performance improvements

#### Fixes added in 1.0.5

- CC001-2642 Performance Problems when many (100+) locations in account
- CC001-2664 All Location Performance improvement
- CC001-2671 Optimize calls on All Locations, Watchlist, Quick Connect, Clients, Clients Location
- CC001-2670 Allow card click navigation when location cards are loading

#### Fixes added in 1.0.4

- CC001-2341- Application goes blank when trying to open it after minimizing it.
- CC001-2442- Validation error when trying to save local controller
- CC001-2500 - Saved Controller remember password functionality fix.
- CC001-2505 - The Client card address truncation
- CC001-2508 - The Last Firmware Update Date sort fix
- CC001-2509 - Saved Controller pagination fix
- CC001-2518 - The App becomes blank while accessing the Watchlist.
- CC001-2521 - User can get stuck on the All Locations screen.

### Fixes added in 1.0.3

- CC001-1877 Location Mute queues the alerts when it shouldn't
- CC001-1821 Create New Client, Entered State value is overwritten/saved with City value
- CC001-2344 Update note field> Mandatory field validation is display though it is a optional field
- CC001-2341 Application going blank when trying to open it after minimizing it.
- CC001-2205 Extra backslash(\) display along with underscore(\_) into the client name
- CC001-2175 Remove "Alert Modes" from "Add Recipient to All" and "Add Alert Recipient to This Device" Dialogs
- CC001-1945 Save Pagination Settings on Quick Connect Tab
- CC001-1917 Download Software should have sortable filter columns as does Documentation page
- CC001-1875 Cannot save email that uses underscore
- CC001-1828 Profile > Manage Alerts Improvements
- CC001-606 Login Page Redesign
- CC001-2224 Profile > Update button is not enabled if user try to update only Default Alert Settings
- CC001-1794 Client Image Warning message rewrite
- CC001-1263 Location Card: Address overflows in UI
- CC001-2333 Default note category not populated in frontend application while created new company from application form
- CC001-2346 Cannot Add location with Dealer name that contains "&"

### Fixes added in 1.0.2

- CC001-2172 Cannot add Recipient in the list once deleted from device
- CC001-2138 Map distorted when two controllers have same location
- CC001-2131 Removing alerts and notification counter is taking time when marked as read
- CC001-2130 Wrong messages on Mark as read for Alerts and Notifications
- CC001-2123 When note categories are bigger in length text is pushed to second line
- CC001-2094 Postal Code Validation too strict
- CC001-2074 Map Pins not using Client Contact address, still using controller Lat/Lon
- CC001-2068 Add Recipient to All: Add User Pulldown



- CC001-2055 User Email has broken verification link
- CC001-2044 User able to update time tracking details when start time is greater than the end time
- CC001-2037 The recently created note is added to the end of the list
- CC001-2029 Profile > View My Groups> Group name text overlap with the location name.
- CC001-2020 Reformat Note List
- CC001-2015 In-App navigation not working
- CC001-1992 Create Location > Select Client pulldown should be alphabetical
- CC001-1972 Time Format Not Followed in Notes
- CC001-1905 Force app upgrade function
- CC001-1889 Downloads Documentation section "MISCELLANOUS" is misspelled
- CC001-1877 Location Mute queues the alerts when it should purge them
- CC001-1820 Default Configured Devices Alerts & Threshold in Profile Setting
- CC001-1819 Location> Add Location>Client details: User is not able to add location when first checked 'Add new Client' checkbox and then select 'select Existing client' checkbox.
- CC001-1827 Add User > Location Permission rename to "Default Location Permission"
- CC001-1375 Notification - Auto Mark As Read
- CC001-2098 Cannot Delete Users from Location
- CC001-2167 Error adding location with double byte characters devices/names (utf8 double byte support)

#### Fixes added in 1.0.1

- CC001-946 Add Location: User unable to add any location if any group is not associated with it
- CC001-686 Client Contacts table which is now sortable by column does not have default sort selected and no indication table is sortable
- CC001-423 Location Settings: Select different contact would not update with appropriate address in Client Info area
- CC001-2033 Navigation from search is not working
- CC001-2029 Profile > View My Groups> Group name text overlap with the location name.
- CC001-2015 In-app navigation not working when clicking on alert
- CC001-1895 Connected Devices should not have Alert Modes enabled by Default

- CC001-1870 Save Controller display limit of 10 controllers
- CC001-1570 Cannot Delete location if Controller or Stratus User on Controller not available
- CC001-1548 Communication Status Table layout issues
- CC001-1522 Client Contact: Getting error "Precondition failed" when we try to delete primary contact
- CC001-1510 Delete Last note remove the note from list but leave note contents on screen
- CC001-1503 Changing Contact in Locations settings passes when you update but does not save the change and reverts back to original contact
- CC001-1501 Deleting Client Contacts that is used in a location as a Primary Contact fails with error "Pre-condition failed"
- CC001-1498 View group: Alignment issue on view group page
- CC001-1490 Create new client: finish button is not getting disabled even mandatory field "time zone " is not selected
- CC001-1477 Center Alert/Notification Counts in circle
- CC001-1466 Search panel not closing after selecting a result
- CC001-1446 Manage Alerts Screen: Subsystem & device text positioning
- CC001-1436 Location Note: Note text is overflowing for large text
- CC001-1409 Add Location Client Details page will allow leading spaces in any of the fields but also saves them with the spaces
- CC001-1261 Address overflow issues